

DOUGHPRO[®]

STEARNS PRODUCT DEVELOPMENT CORPORATION

Operations Manual

DPR2000

Single Pass Dough Sheeter

Doughpro

20281 Harvill Ave
Perris, CA 92570

Phone (951) 657-0379

Toll Free (800) 624-6717

Fax (951) 657-4594

Website: www.doughpro.com

E-Mail: info@doughpro.com

Listed:



WARNINGS FOR OPERATOR



CAUTION
DO NOT OPERATE DOUGH ROLLER
WITHOUT THE GUARDS IN PLACE



CAUTION
DO NOT CLEAN THIS DOUGH ROLLER
WHILE IT IS PLUGGED IN



CAUTION
DO NOT USE SHARP OBJECTS
TO CLEAN ANY PART OF THE MACHINE



CAUTION
KEEP HANDS AND FINGERS
CLEAR OF MOVING PARTS



CAUTION
DO NOT PLACE ITEMS
OTHER THAN DOUGH INTO THE CHUTE



CAUTION
IN CASE OF POWER CORD DAMAGE,
DO NOT ATTEMPT TO REPAIR
OR REPLACE THE POWER CORD.
CONTACT THE MANUFACTURER
OR THE LOCAL DISTRIBUTOR



CAUTION
DO NOT USE OIL OR GREASE
ON MACHINE PARTS
AS THEY DO NOT
REQUIRE RE-LUBRICATION

SINGLE PASS DOUGH ROLLER

The Ultimate Tabletop Sheeter in the Industry

- Sheets 500-600 pieces per hour
- Ergonomic design for safety, speed, sanitation, and ease of use
- Heavy-Duty stainless steel construction
- Simple handle adjustments for exact, uniform dough thickness
- Safety sensors for automatic shutoff
- Compact design for maximizing counter space
- Convenient side operation
- Maintenance-free drive mechanism isolated from roller area
- Spring-loaded scrapers for easy removal and cleaning

● Listed:

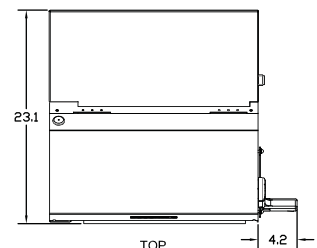
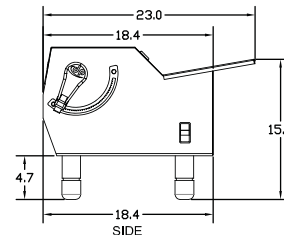
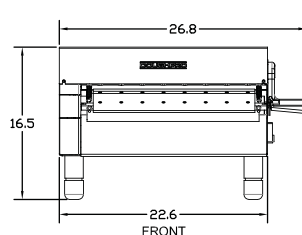


The Most Versatile Tabletop Sheeter

Perfect For

- Pizza Dough
- Danishes
- Dough Lamination
- Fondant
- Pie Crusts
- Yeast Raised Donuts
- Pasta Production
- Cinnamon Rolls

ON/OFF Switch	Yes	Electrical Data 115v/60hz 8.8 amps
Bearings	Sealed	
Adjustable Thickness	Yes	230v/50hz 4.4 amps
Legs	4.7"	Shipping Weight 135 lbs. / 60 kgs.
Finish	Stainless	



Includes 72" cord and NEMA plug.

*Specifications, Details and Prices are subject to change without prior notice.
Please call for current pricing.*

DOUGHPRO

20281 Harvill Ave, Perris CA 92570
(951) 657-0379 (800) 624-6717 Fax (951) 657-4594

DPR2000 Operations Instructions

Step 1.

Turn the unit on by pressing the green power button.



Step 2.

Adjust the thickness of the rollers by rotating the easy adjust arm on the right side of the unit.



Step 3.

Pre flour the hopper to make sure the rollers have been coated. Apply a liberal amount of flour to your pre-portioned dough ball.



Step 4.

Slide your dough ball through the hopper, and catch on other end. You may have to run your dough ball through multiple times to achieve your desired thickness.



DPR2000 Cleaning Instructions

Important: Please make sure the DPR2000 is off and unplugged before cleaning.

Step 1.

Loosen the 2 housing screws on the front panel of the machine. Then lift up the front panel.

Step 2.

It is **important** that you remember how the two scrapers that are going to be removed are positioned inside the unit. Start by removing the two springs off of the lower scraper. The scrapers are now free and can be removed.

Step 3.

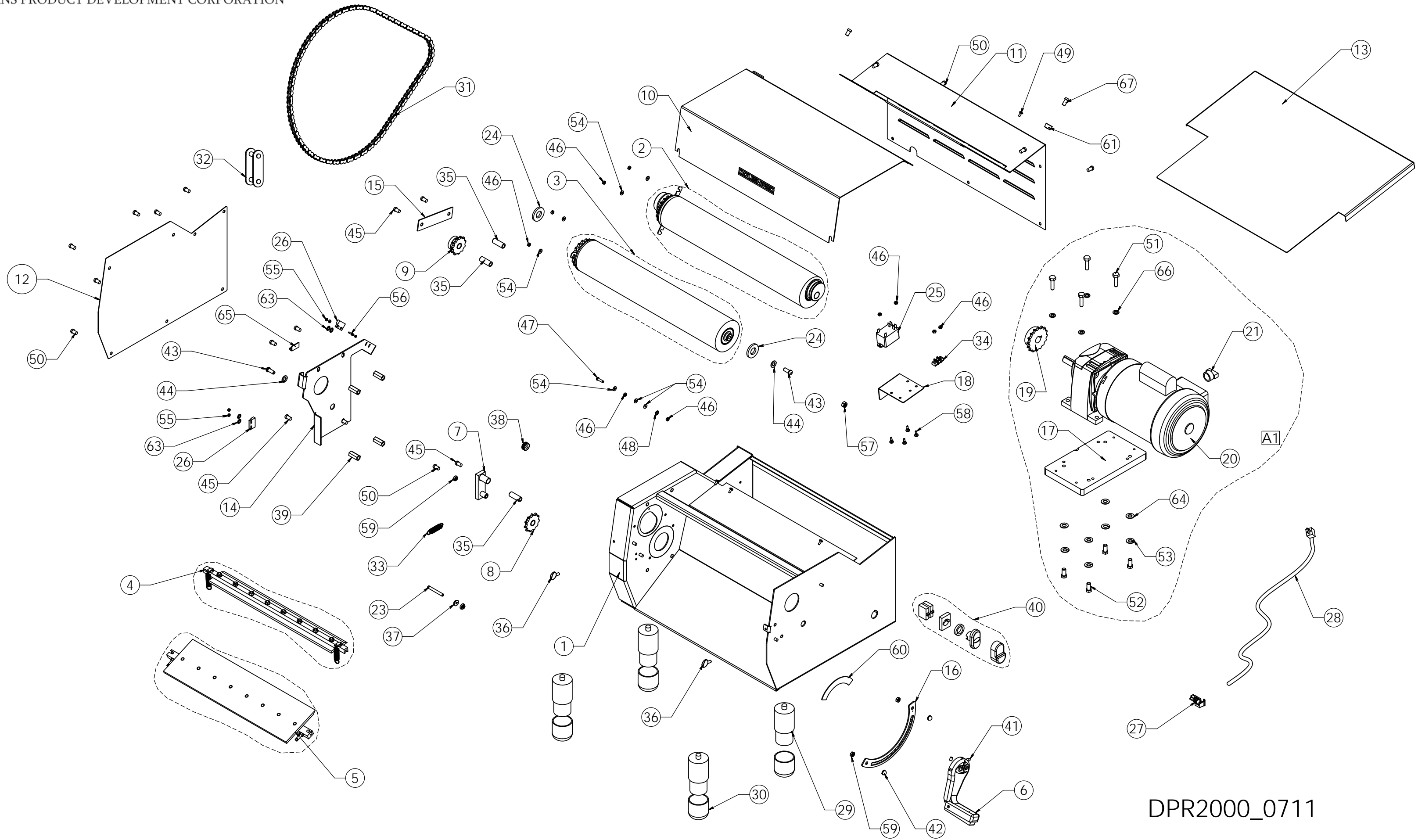
Clean the rollers, scrapers and housing with a damp cloth then dry with cloth.

Step 4.

Re-attach the scrapers and springs.

Step 5.

Lower the front panel and tighten the two housing screws.



MODEL DPR 2000

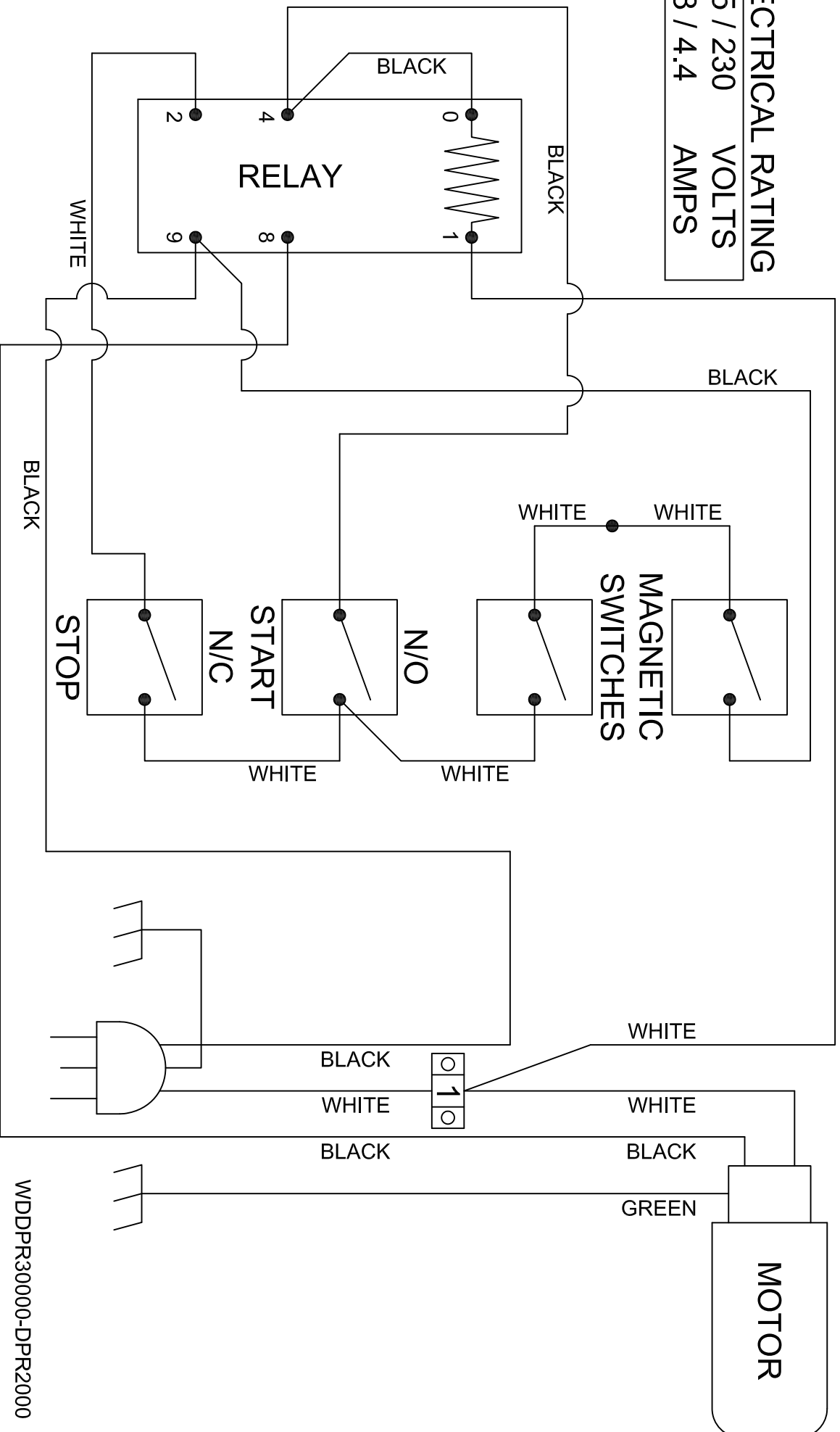
ITEM #	DESCRIPTION	MODEL		QTY.
		DPR2000A	DPR2000B	
		120V	220V	
1	FRAME WELDING ASSY	110100101	110100101	1
2	TOP ROLLER ASSY	110100111	110100111	1
3	MIDDLE ROLLER ASSY	1101097032	1101097032	1
4	TOP FRONT SCRAPER #2 ASSEMBLY	1101097053	1101097053	1
5	MIDDLE FRONT SCRAPER #3 ASSEMBLY	1101097059	1101097059	1
6	HANDLE ADJUSTMENT ASSEMBLY	1101097118	1101097118	2
7	IDLER BAR ASSY	110100107	110100107	1
8	11 TEETH IDLER SPROCKET ASSY	1101097014	1101097014	1
9	11 TEETH SPROCKET ASSY	1101097019	1101097019	1
10	SAFETY COVER ASSY	110062908	110062908	1
11	BACK COVER	110062904	110062904	1
12	SIDE COVER	110062909	110062909	1
13	SLIDING TRAY	110100106	110100106	1
14	CHAIN GUARD	110100105	110100105	1
15	11 TEETH SPROCKET SUPPORT	1101097121	1101097121	1
16	ADJUSTMENT PLATE	1101097119	1101097119	1
17	MOTOR BASE	110623006	110623006	1
18	RELAY BRACKET	1101097080	1101097080	1
19	16 TEETH SPEED REDUCER SPROCKET	110579123	110579123	1
20	GEAR MOTOR	110579122120	110579122230	1
21	3/8X1/2 CLAMP CONNECTOR	100455167	100455167	1
22	N/A	N/A	N/A	
23	PIN TENSION SPRING	1101097079	1101097079	1
24	MIDDLE ROLLER SPACER	1101097105	1101097105	2
25	RELAY	1101097081	1101097081230	1
26	PROXIMITY SWITCH	1101097082	1101097082	2
27	STRAIN RELIEF	MPS90014	MPS90014	1
28	POWER CORD	110969174	110969175	1
29	ADJUSTABLE LEG	1101097091	1101097091	4
30	NEOPREME FOOT PAD	1101097096	1101097096	4
31	#41 CHAIN	1101097114	1101097114	33.75"
32	#41 LOCKING LINK CHAIN	1101097085	1101097085	1
33	SPROCKET STENSION SPRING	1101097015	1101097015	1
34	TERMINAL BLOCK	6991	6991	1
35	THREADED SPACER	1101097074	1101097074	3
36	THUMB SCREW WITH SHOULDER	1101097086	1101097086	2
37	1/4-20 SERRATED HEX NUT	NHF1420	NHF1420	2
38	GROMMET	110969116	110969116	1
39	5/16-18 x1 1/8 HEX COUPLING	1101097094	1101097094	4
40	ON/OFF COMBINATION SWITCH	1101097083	1101097083	1
41	1/4-20 x 3/8 SET SCREW	SST142038	SST142038	3
42	ACORN NUT 1/4-20	NA1420	NA1420	2
43	SCREW, SOCKET BUTTON HEAD 5/16-18 x 3/4	SB5161834	SB5161834	2
44	5/16 SAE WASHER	WSAE516	WSAE516	2
45	5/16-18 x 5/8 BUTTON HEAD SCREW	SB5161858	SB5161858	7
46	HEX NUT 8-32	NH832	NH832	10
47	SCREW PAN HEAD PHILLIPS 8-32 X 3/4 S.S.T	SP83234S	SP83234S	1
48	WASHER #8 INTERNAL TOOTH LOCK	WLIT8	WLIT8	1
49	SCREW, PHILLIP 8-32 x 3/8 Stainless Steel	SP83238S	SP83238S	4
50	1/4-20 x 1/2 BUTTON HEAD SCREW S.S.T	SB142012S	SB142012S	13
51	BOLT, HEX 5/16-18 x 1-1/4 SST	BH51618114S	BH51618114S	4

52	SCREW SOCKET HEAD 3/8-16 X 1.0	SSH38161	SSH38161	4
53	WASHER LOCK	WL38	WL38	4
54	WASHER #8	WSAE8	WSAE8	7
55	HEX NUT 4-40	NH440	NH440	4
56	SCREW ROUND HEAD 4-40 X 1/2	SR44012	SR44012	2
57	NEX NUT 5/16	NH51618	NH51618	1
58	SCREW PHILLIPS 8-32 X 5/8	SP83258	SP83258	4
59	NUT HEX 1/4-20	NH1420	NH1420	3
60	DECAL GAGE	DP110109720T	DP110109720T	1
61	BUMPER	110100115	110100115	1
62	N/A	N/A	N/A	
63	WASHER #6 INTERNAL TOOTH LOCK	WILT6	WILT6	4
64	3/8 SAE WASHER	WSAE38	WSAE38	4
65	RIBBON CABLE CLIP	11090113	11090113	1
66	WASHER LOCK 1/4	WL14	WL14	4
67	SCREW BUTTON HEAD, 1/4-20 x 5/8	SB142058	SB142058	1
A1	GEAR MOTOR KIT ASSEMBLY	1105797120	1105797230	1

DOUGHPRO

MODEL DPR3000 / DPR2000 WIRE DIAGRAM

ELECTRICAL RATING	
115 / 230	VOLTS
8.8 / 4.4	AMPS





**PLEASE READ CAREFULLY BEFORE ATTEMPTING TO USE
THIS APPLIANCE.**

LIMITED MACHINE WARRANTY

WHAT IS COVERED

Doughpro warrants the DPR2000, from manufacturing defects in workmanship and material sold within the domestic United States.

HOW LONG DOES THE COVERAGE LAST

One year warranty for parts and labor. The heating elements on the upper and lower platens have a limited lifetime warranty on the elements.

WHAT WE WILL DO

We will repair or replace the defective DPR2000 on normal warranty one year parts and labor. The heating elements on the upper and lower platen only; will be replaced by next day air service; under the normal one year warranty. Such repair or replacement will be at the expense of Doughpro on under the normal one year warranty.

HOW TO GET SERVICE

Contact our Factory to obtain warranty service. Doughpro must issue a return authorization number, and call tag, or find the name and location of a Factory Authorized Service Center nearest you. When calling for service, please furnish the model number, serial number, and a description of the problem.

WHAT THIS WARRANTY DOES NOT COVER

THE WARRANTIES PROVIDED BY DOUGHPRO DO NOT APPLY IN THE FOLLOWING INSTANCES:

- Damage due to misuse, abuse, alteration, or accident.
- Improper or unauthorized repairs.
- Submerged in water.
- Dropped.
- Damage in shipment.
- Equipment exported to foreign countries.



STEARNS PRODUCT DEVELOPMENT CORPORATION

Warranty & Return Policy

STEARNS PRODUCT DEVELOPMENT CORPORATION warrants all products manufactured by it against defects in workmanship or materials from the date of purchase for a period of (1) year on parts and labor. **This warranty applies to only equipment purchased and used in the United States.**

ALL WARRANTY SERVICE CALLS MUST BE APPROVED BY DOUGHPRO. IF THIS PROCEDURE IS NOT FOLLOWED, WARRANTY SERVICE WILL NOT BE COVERED.

Exclusions:

- 1. WOOD / GAS FIRED OVENS: STEARNS PRODUCT DEVELOPMENT CORPORATION** warranty applies to the main body of the oven being steel / refractory and insulation shall be free from defects in materials and workmanship for a period of four (10) years from the date of purchase. The gas equipment shall be free from defects in materials and workmanship for a period of one (1) year from the date of purchase. This warranty excludes the tandoori and home oven. Lifetime warranty against cracks on oven floor.
- 2. TANDOORI & HOME OVENS: STEARNS PRODUCT DEVELOPMENT CORPORATION** warrants the Tandoori & Home Oven including gas equipment shall be free from defects in materials and workmanship for a period of one (1) year from the date of purchase.
- 3. Air compressors are excluded from this warranty, but STEARNS PRODUCT DEVELOPMENT CORPORATION** may act as a warranty expeditor in certain instances regarding these compressors. The air compressor manufacturer provides a limited warranty and a copy of this warranty is furnished with all compressors sold by **STEARNS PRODUCT DEVELOPMENT CORPORATION**. For prompt handling of compressor warranty claims the instructions of the compressor manufacturer must be adhered to.
- 4. Equipment built to special order as well as accessories** are not returnable unless defective within the terms of this warranty.
- 5. In no event shall STEARNS PRODUCT DEVELOPMENT CORPORATION be liable for consequential damages arising out of the failure of any of its products if operated improperly or caused by normal wear or damage by operator abuse.**

Returned Merchandise Policy:

Should it become necessary to return any of the company's products, the following instructions must be adhered to: First, contact our customer service department for approval and a return authorization number. *Please have the serial number of your item available at that time.* All merchandise must be shipped *freight prepaid* by customer or service agency. Subject to the inspection of the product by the company, a restocking charge of 20% of the Net purchased price paid to **STEARNS PRODUCT DEVELOPMENT CORPORATION** will be assessed. Merchandise may not be returned for credit without *prior written approval* of **STEARNS PRODUCT DEVELOPMENT CORPORATION**. Collect shipments *will not* be accepted. No returns after 60 days of original shipment date on machines. Purchased parts may not be returned after 30 days. If upon inspection by **STEARNS PRODUCT DEVELOPMENT CORPORATION** or its authorized agent it is determined the equipment has not been used in an appropriate manner, has been modified, or has not been properly maintained, or has been subject to misuse, misapplication, neglect, abuse, accident, unauthorized modification, damage during transit, delivery, fire, flood, act or war, riot or act of God, then this warranty shall be deemed null and void.

Terms & Conditions:

- Prices indicated in the PRICE LIST are suggested retail prices and are shown in U.S. DOLLARS.
- Terms of Payment: 1% 10 days, NET 30 days.
- NEW ACCOUNTS:** Satisfactory credit information must be provided before open account status can be extended. Unless agreed otherwise, all shipments will be made C.O.D., CASH IN ADVANCE.
- PRICING:** Prices, specifications, model numbers, capacities and accessories are subject to change without notice.
- FREIGHT / ROUTING:** Method of shipment will be determined by **STEARNS PRODUCT DEVELOPMENT CORPORATION** unless otherwise advised by PURCHASER.
- DAMAGED CLAIMS:** All merchandise shipped at purchaser's risk. Inspection must be made by purchaser at time goods are received. If goods are damaged, the PURCHASER shall request that the agent of the transportation company make a written notation on the proper shipping documents immediately and then file a claim for damage. **GOODS DAMAGED IN SHIPMENT ARE NOT RETURNABLE.**
- RETURNS:** Machines may not be returned after 60 days. Purchased parts may not be returned after 30 days. A restocking fee of 20% will be assessed on non-warranty returns.
- TAXES:** Prices indicated herein DO NOT include State, Federal, Local or foreign taxes or duties, nor do they include fees, permits, insurance or other levies, all of which are the responsibility of the purchaser.
- All orders are subject to acceptance by **STEARNS PRODUCT DEVELOPMENT CORPORATION**.
- Possession of this price list shall not be considered an offer to sell.